

# FWSS/SLSS

SYSTEMTANK FRESH

**SONNENKRAFT**

## EASY

Fresh, hygienic hot water - Fresh water module FWS40HYDRO  
pre-assembled at the storage tank

## EFFICIENT

perfectly combinable with heat pump and pellet boiler

## EXTRA

available with and without solar register



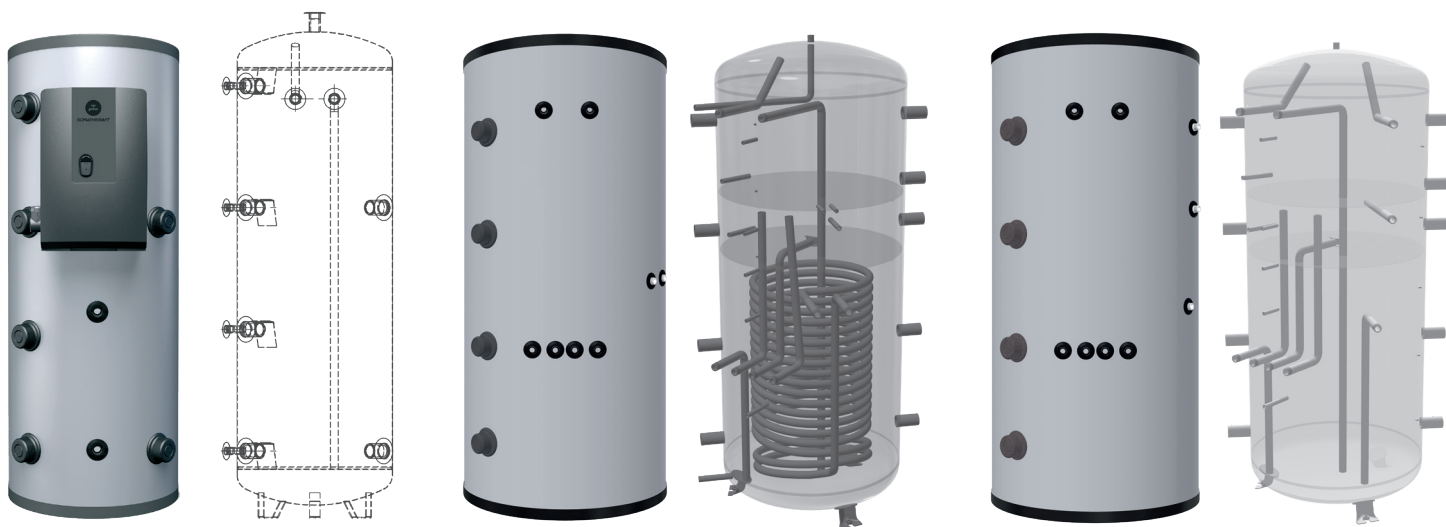
## TECHNICAL DATA

		FWSS			SLSS		
		500	800	1000	500	800	1000
Net capacity	l	491	744	912	491	776	912
Diameter, insulated	mm	750 (Schaum)	1000 (Vlies)	1000 (Vlies)	750 (Schaum)	1000 (Vlies)	1000 (Vlies)
Diameter, without insulation	mm	-	790	790	-	790	790
Height, insulated	mm	1935	1825	2135	1935	1825	2135
Height, without insulation	mm	-	1755	2038	-	1755	2038
Tilted height	mm	2120	1798	2080	2120	1798	2080
Weight with insulation & FWSHYDRO	kg	85	160	180	110	130	140
Perm. operating press. for heating	bar	3	3	3	3	3	3
Perm. operating press. for solar	bar	10	10	10	-	-	-
Perm. operating temp. for heating	°C	95	95	95	95	95	95
Perm. operating temp. for solar	°C	110	110	110	-	-	-
Heating area, solar register	m²	1,8	2,5	3	-	-	-
Energy efficiency class		B	C	C	B	C	C

FWSS500/SLSS500

FWSS800/1000

SLSS800/1000



## BUFFER TANK COMBINABLE WITH FOLLOWING MODULES

FRESH WATER TANK	FRESH WATER MODULE	HEATING CIRCUIT MODULE	SOLAR PUMP GROUP		OPTIONAL
FWSS500/SLSS500	FRESH20E/30E or FRESH40HYDRO	-	-	-	-
FWSS800/1000		HKGNT E or HKGNT E/HTE	SST25E	-	Additional storage tank BS
SLSS800/1000			-	SL50, BL25	

